

Myelinated nerve fiber layer

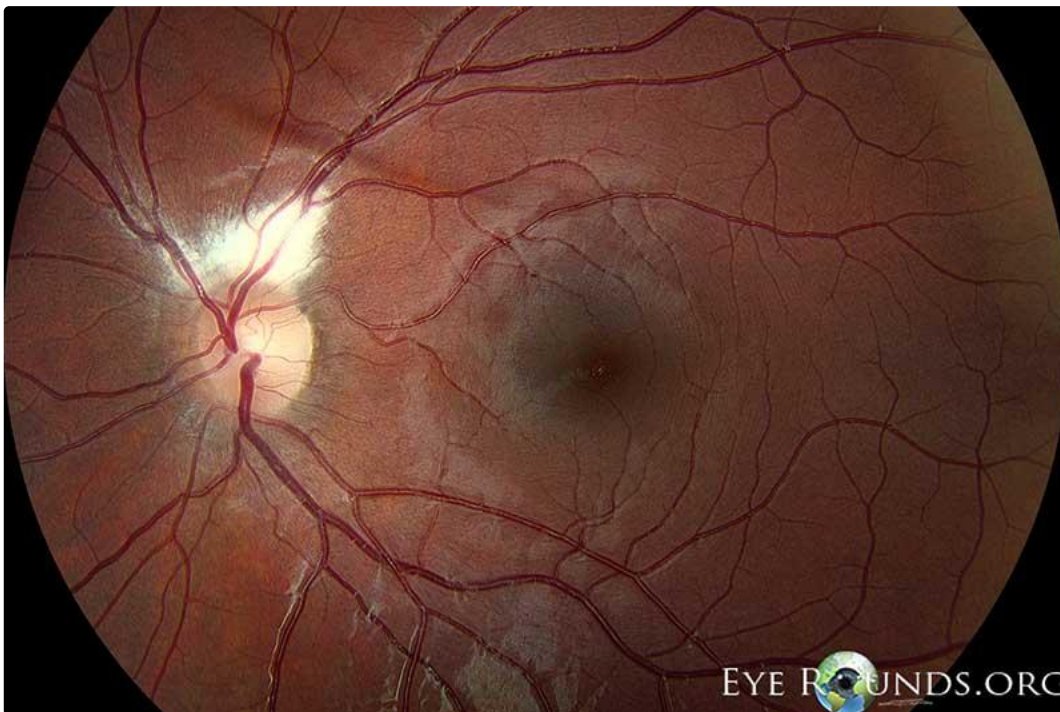
Category(ies): Pediatrics, Retina

Contributor: [Jesse Vislisel, MD](#)

Photographer: Photographer: Stefani Karakas, CRA, Brice Critser, CRA



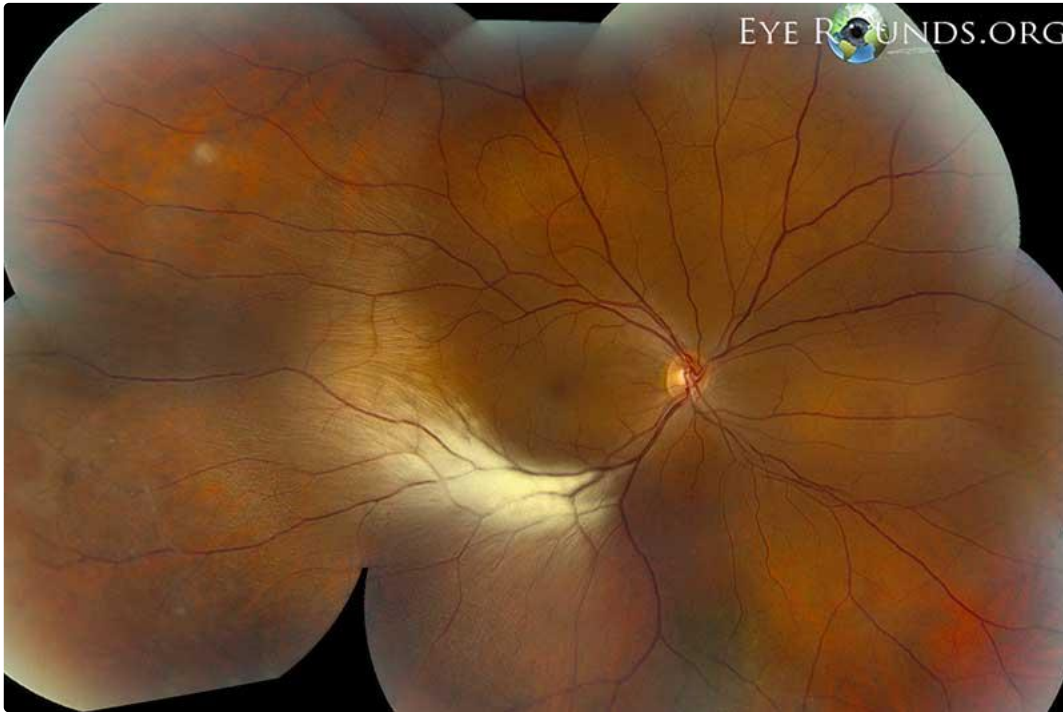
Myelination of the optic nerve fibers normally begins at the lateral geniculate body and ceases at the lamina cribrosa. However, in some individuals areas of the retinal nerve fiber layer can also become myelinated. Classically, this finding is unilateral and peripapillary in location, appearing as a white, flame-shaped area with feathered borders as seen in the top photo. The bottom photo shows a less common presentation affecting a more extensive distribution of the peripheral nerve fibers. Note how the nerve fibers temporal to the macula respect the horizontal raphe, a concept not easily visualized under normal conditions.



Photographer: Brice Critser, CRA

[Enlarge](#)

[Download](#)



Stefani Karakas, CRA

[Enlarge](#)

[Download](#)

Image Permissions:



Ophthalmic Atlas Images by [EyeRounds.org](#), [The University of Iowa](#) are licensed under a [Creative Commons Attribution-NonCommercial-NoDerivs 3.0 Unported License](#).

Address

University of Iowa
Roy J. and Lucille A. Carver College
of Medicine
Department of Ophthalmology and
Visual Sciences
200 Hawkins Drive
Iowa City, IA 52242

[Support Us](#)

Legal

Copyright © 2019 The University of
Iowa. All Rights Reserved
[Report an issue with this page](#)
[Web Privacy Policy](#) |
[Nondiscrimination Statement](#)

Related Links

[Cataract Surgery for Greenhorns](#)
[EyeTransillumination](#)
[Gonioscopy.org](#)
[Iowa Glaucoma Curriculum](#)
[Iowa Wet Lab](#)
[Patient Information](#)
[Stone Rounds](#)
[The Best Hits Bookshelf](#)

EyeRounds Social Media

Follow



Receive notification of new cases,
sign up here
[Contact Us](#)
[Submit a Suggestion](#)